



 **seijsener**



The Netherlands
Noorder IJ- en Zeeweg 11
P.O. Box 406
1500 EK Zaandam The Netherlands
T +31 - 75 - 6810 611
F +31 - 75 - 6123 276
I www.seijsener.com
E info@seijsener.nl



WHO WE ARE

Seijsener Marina Services is a name that resounds across the globe in the context of technical facilities for marinas. Expertise, effectiveness, inventiveness, quality, and commitment are key terms when describing Seijsener Marina Services.

CUSTOMISED MARINA

Our fine reputation is based on 40 years of marina know-how and our drive to always provide our clients with the best possible, custom-made facilities. No two marinas are ever identical. Location, target group, legislation, personal preferences: in consultation with you, Seijsener merges them into a technical installation that fits your marina like a glove.

IN-HOUSE DESIGN AND PRODUCTION

It is our aim to produce harbour facilities that will last for years and years without any problem and also under extreme circumstances, seeing as wind, salt water and waves are the rule rather than the exception at marinas. We therefore design, manufacture, and install most products ourselves and we choose materials and devise constructional structures that will always lead to high-quality end products. Those products are manufactured by our highly-trained and experienced experts at our own factory using ISO 9001-certified work methods. On an international scale, we exclusively work with innovative, expert and reliable partners.

MARKET LEADER

Our philosophy and way of working have already helped us become a market leader in the Netherlands, Belgium, and Luxembourg, as well as a highly respected player in various other European countries. Seijsener has operations in the Netherlands (Zaandam, Heinkensand and Koudum), Belgium, Germany and France. Seijsener Marina Services' products grace jetties and quays across the globe: from Norway to Gibraltar, and from the Caribbean to the Middle East.

100% COMMITMENT

As you leaf through this brochure, you will get a grasp of why marina owners and operators across the world put their trust in the products and services of Seijsener Marina Services. This is because, at Seijsener, technology, reliability, design, and attractive pricing always go hand in hand with 100% commitment to the success of your marina project.



stylish and compact

ARCTIC

Its compact design and stylish, slim appearance make the Arctic a real looker. As the slender Arctic occupies little space, you will be left with a wider passageway on your jetties.

The Arctic's multifunctional body enables an unprecedented array of application possibilities and, thanks to the high quality of the materials used, you will be introducing "Seijsener security" into your marina with this robust dock pedestal.

ONE HARBOUR, ONE DOCK PEDESTAL!

The Arctic's versatility makes it possible to only use the Arctic at places where you would normally need several different types. The end result: a sleeker and more harmonious look for your jetties.

THE ARCTIC IS HERE TO STAY

Dock pedestals come in different types and sizes. Seijsener Marina Services has opted for durable aluminium as a base material. A meticulous manufacturing process and high-quality anodised or powder coated finish lead to an end product that will easily last many years as a high-grade dock pedestal.



VERSIONS AND OPTIONS

- The Arctic comes with a door with cable lock as standard.
- The Arctic offers room for a maximum of 6 power socket outlets or connections for electronic kWh meters.
- Compatible with 230V / 16A.
- The Arctic can be used as a drinking water outlet, with or without a hose reel.
- Also available as an emergency pedestal with fire extinguisher and life buoy.
- Arctic dock pedestal is available in any colour. The standard colour is white anodised or powder coated blue.
- The Arctic can also be delivered as a stand-alone lighting pedestal.
- Any other requirements? We will be glad to draw up a customised quote for you.

DIMENSIONS

body	160 x 100 mm
height	425/850 / 2,000 mm
pedestal base	240 x 190 x 6 mm

COVERS AND LIGHTING



Standard flat aluminium cover.



Transparent illumination for surrounding area lighting.



Light cover with 1, 2 or 3 down-facing LEDs.

stylish and compact

ARCTIC

THE COMPACT ALL-ROUNDER

When selecting the Arctic as the standard dock pedestal for your marina, you will be placing a compact, economical all-rounder on your jetties. Its compactness turns the Arctic's versatility into quite a feature. When looking at the range of possible applications, this dock pedestal certainly measures up to larger models.

Thanks to its smart design, one Arctic can be equipped with 4 CEE socket outlets, plus accompanying residual current devices and possible electronic kWh meters. The attractive illumination further increases its functionality.



The Arctic is also highly suitable as a water pedestal with tap and hose reel. The ball valve that is sunk into the dock pedestal reduces the risk of things getting caught behind it, and leaves the line of flow intact.

Illumination with appealing design also makes the Arctic a fine stand-alone lighting pedestal, both for the lighting of the pedestal itself and of the surrounding area.

The Arctic is also available as an extremely complete emergency pedestal.



flexible and user-friendly

PACIFIC

Guests and visitors at your marina expect problem-free use of all facilities. However appearances also count. You, as the operator, would rather not have to worry about assembly and maintenance.

Based on these wishes, Seijsener has developed the Pacific light and service dock pedestal. A compact dock pedestal that meets all your expectations as well as those of your guests.



MULTIPURPOSE

The Pacific has a compact and sleek design, but still offers the option of building in virtually every kind of facility and equipment. Such as CEE power sockets, CAI power sockets and connections for water, radio/TV, internet and telephone. It is up to you to decide whether you want to offer these services for free or charge for it. If you choose to charge your guests, you can do so through kWh meter readings or by using a coin-operated or SEP card-operated prepayment system.

DURABLE CONSTRUCTION

The material we use to make the Pacific is of the highest quality. The base is made of extruded high-quality aluminium mast profile with a thickness of no less than 3.5mm. That offers you the benefit that the Pacific is practically maintenance-free and this dock pedestal is also splash-proof (IP54). If required, the Pacific can be made to fall into proofing grade IP67.

ALWAYS A PERFECT FIT

Choosing the Pacific means choosing maximum flexibility. You will, of course, decide which facilities the dock pedestal has to offer. Apart from in its standard white anodised and blue powder coated versions, the Pacific is available in any other colour you wish. You can even define the height of the dock pedestal.

That way the Pacific is always a dock pedestal that seamlessly fits into the style of your marina.



flexible and user-friendly

PACIFIC

MOUNTED IN NO TIME

Whichever version you choose, every Pacific offers a smart quick-assembly and connection system. Every dock pedestal is made up of one single compartment with unique extruded

quick-assembly profiles for the fitting of equipment and cover plates. These dock pedestals are therefore mounted in no time, meaning considerable savings on assembly

costs. You can always leave assembly and connection to Seisener experts, or to one of our reliable partners.

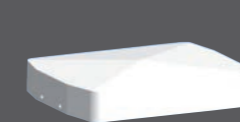
INTERNATIONAL QUALITY MARKS		
critierion:	as set by:	
<i>With correctly installed service pedestals your marina will meet the following criteria of international quality marks:</i>	Blue Flag (int) 	Gold Anchor (UK) 
Electricity and drinking water available at berth	<input checked="" type="checkbox"/>	<input checked="" type="checkbox"/>
Installation will have to be approved under national regulations	<input checked="" type="checkbox"/>	<input checked="" type="checkbox"/>



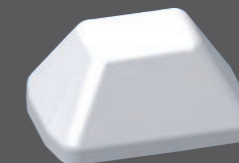
VERSIONS AND OPTIONS

- The Pacific comes with a smart quick-assembly and connection system.
- Offers room for a maximum of 4 power sockets with a payment system (coin-operated, SEP card) or connections for electronic kWh meters.
- Compatible with 220V / 16A to 400V / maximum 32A;
- The Pacific dock pedestal is available in any colour. The standard colour is white anodised or powder coated blue.
- The Pacific can be used as a drinking water outlet / dispenser.
- Any other requirements? We will be glad to draw up a customised quote for you.

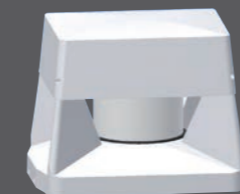
COVERS AND LIGHTING



The Pacific is delivered with a flat cover as standard.



Polycarbonate cover with built-in light.



Crown fitting for the lighting of area surrounding jetties.



Energy-efficient LED cover ensures attractive and subtle lighting.

DIMENSIONS

body 245 x 185 mm
height 400 / 800 / 1,200 mm
pedestal base 338 x 212 x 6 mm



Transparent illumination for surrounding area lighting.

innovative and versatile

ATLANTIC

Water mains connection, CEE power sockets, locks, CAI power points, free power or water supplies or with a coin-operated or SEP card payment system: the Atlantic can be customised to your taste, wishes, and specs.

But no matter how you use the Atlantic, its classic design will always be 100% recognisable. That is how the Atlantic will add to the unique character of your marina.

EXCELLENT PRICE / QUALITY RATIO

The price does, of course, depend on the contents you are after, but the basic product, i.e. that robust empty dock pedestal, is very sharply priced and the co-extruded quick-assembly profiles guarantee little time is spent on assembly.

DUST-PROOF AND SALT WATER-PROOF

The Atlantic dock pedestal is KEMA-tested and IP54-tested! This dock pedestal has had to come through a range of tough tests, such as a talcum powder and water test, which it passed with flying colours. The Atlantic is made of 3.5mm-thick high-quality extruded aluminium. In its anodised version, the dock pedestal is guaranteed to survive 10 years in a saltwater environment without any corrosion!

innovative and versatile

ATLANTIC

A WELL THOUGHT-OUT CONCEPT

The Atlantic has two separate compartments along its full height, each with its own lockable door. Water and power are therefore fully separated within the dock pedestal. Safety first! Its brass cylindrical locks make the Atlantic easy to service, place, and install.

The Atlantic dock pedestal is mounted as efficiently as possible, making all facilities easy to operate. An Atlantic dock pedestal with a hose reel only takes up 45 centimetres of jetty width. Its convenient placing also makes the reel easy to use. Just like the power points



mounted on the side. A possible payment system and operating windows for switchgear

are also easy and safe to operate. They do not require any dangerous manoeuvring because nothing is installed on the side facing the water.

The hose reel is equipped with grey impact-proof plastic sides. These will not warp or, as you often see in marinas, break off.

The Atlantic's illumination is made of one piece and does not consist of two halves that with time cease to properly fit onto each other.



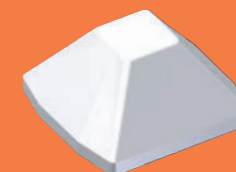
VERSIONS AND OPTIONS

- The Atlantic comes with a smart quick-assembly and connection system.
- The Atlantic offers room for a maximum of 6 power sockets with a payment system (coin-operated, SEP card) or connections for electronic kWh meters.
- Compatible with 230V / 16A to 400V / maximum 125A;
- The Atlantic can be used as a drinking water outlet / dispenser, with or without a hose reel, also combined with a power outlet, with or without a coin slot;
- The Atlantic dock pedestal is available in any colour. The standard colour is white anodised or powder coated blue.
- Any other requirements? We will be glad to draw up a customised quote for you.

COVERS AND LIGHTING



The Atlantic is delivered with a flat cover as standard.



Polycarbonate cover with built-in light.



Crown fitting for the lighting of the area surrounding jetties.



Energy-efficient LED cover lights control features and walkway.

DIMENSIONS

body	240 x 230 mm
height	1,000 / 1,200 mm
pedestal base	387 x 277 x 6 mm



Transparent illumination for surrounding area lighting.

uncompromising class

BALTIC

Mega yachts are built of the best materials and surrounded by maximum care and service. If uncompromising class is a precondition, Seijsener's Baltic should be on the top of your list!

Its robust and well-proportioned body reflects the class of this mega yacht service pedestal.

The Baltic offers everything demanding marina users are after: Amperages up to 600A, high-capacity water mains connections, built-in LED lighting and connections for TV, telephone and internet.





VERSIONS AND OPTIONS

- The Baltic is made of 3.5mm-thick powder coated stainless steel.
- Various system options for power sockets and taps, depending on your preferences and local regulations.
- Power connection compatible with max. 400V / 600A.
- Telephone, tv and internet connections available.



- Water mains connection up to 3 inches.
- The Baltic comes with illumination with 4 power LEDs as standard.
- Colour, shape and finish of the Baltic can be customised. Choose your design and give your marina a unique look with your own features.

uncompromising class

BALTIC

HIGH CAPACITY

We also have a suitable product for your "biggest" customers.

The Baltic offers everything you would expect a mega yacht dock pedestal to offer: discrete lighting, lockable plug sockets, power and water mains connections with high capacity



OPTIMUM SAFETY

On the Baltic's inside, insulation and special clamping blocks ensure maximum insulation of high amperages.

An additional safety feature comes in the form of a watertight partition between the water and the power compartment. A cleverly placed door makes the Baltic easy and quick to access.



space and safety

HARBOUR IN

The best inventions are so obvious that they lead you to think: that is so simple, I could have thought of that. That is the case for Seijsener's Harbour In concept. The simple idea was: mount all marina service connections in the jetty instead of on it.

The patented Harbour In system that Seijsener developed on the basis of this idea became an instant success and has remained that ever since.

A COMPLETE SYSTEM

Without obstacles really means without obstacles with Harbour In. That means that not only power sockets disappear into the jetty surface, but also that the drinking water outlet will be situated right next to every guest's berth. Even the distribution boxes for power points complete with residual current devices and possible kWh meters, are tucked away under an easy to open hatch.

UNCLUTTER YOUR JETTIES

Harbours are originally safe havens for ships and their passengers. With Harbour In you minimise the number of obstacles and cables on the jetties at your marina. Turning it into a safe haven and mooring place for your guests!

The end result? High-quality facilities and uncluttered jetties. Choosing Harbour In is a choice for an "invisible dock pedestal" that your guests will only notice when they actually need it..



space and safety

HARBOUR IN

IN ANY JETTY

The Harbour In system can really be mounted in any kind of jetty, whether it is made of wood, plastic or concrete.

PLUG'N'PLAY

Harbour In service units can be fitted out with the required cable length with a plug in the factory. That enables quick connection of every unit to the distribution box without the time-consuming unscrewing of connections when mounted on a jetty. This Plug'n'Play system will save you a lot of time when mounting the system, and that means cost savings!



Stainless steel connection point



Impact-proof plastic connection point



Drinking water outlet



City Marina Flatbox: distribution box with stainless steel gas spring shutter.

OPTIONS

- Available in stainless steel or impact-proof plastic.
- Compatible with max. 400V / 125 A.
- Stainless steel version offers room for max. of 2 socket outlets with residual current devices and electronic kWh meters.
- Water mains connection up to a max. 3 inches.

all connections under one panel

INFRABOX



Houseboats are popular among people who find luxurious living equally important as being out on the water. This type of boat with home comforts requires special connections. Connections that, due to the long-term use of the boat, should be virtually invisible but also

easy to (dis)connect when taking the boat out onto the water. Seijsener Marina Services came up with the Infrabox for that, a solution inspired by the Harbour In. Three connections with quick couplings are mounted under an attractive

stainless steel panel: two for power and water supplies and one for waste water draining. Connections, cables and pipes are neatly tucked away under the jetty surface. The Infrabox: a godsend for anyone looking for home comforts by the waterside!

OPTIONS

- The Infrabox can be customised with the desired voltage, water capacity, and for example TV/internet connection.
- Combination with a compressor installation is ideal for connection to the sewer system.
- Option of laser cutting your own logo and, for example, the box number.



- Built-in, upward-lighting LED lights bring out logo and box number at night.

clean water, satisfied guests

PUMP-OUT

Every water sports enthusiast wants clean waters. Marinas are increasingly installing pump systems to enable their guests to discharge their waste water and/or oily water in a tidy manner.

Seijsener is the prime pump specialist in Europe. Many years of development and anticipating needs have resulted in a sophisticated range of pumps, so that every marina will be able to find a pump system to fit its circumstances.

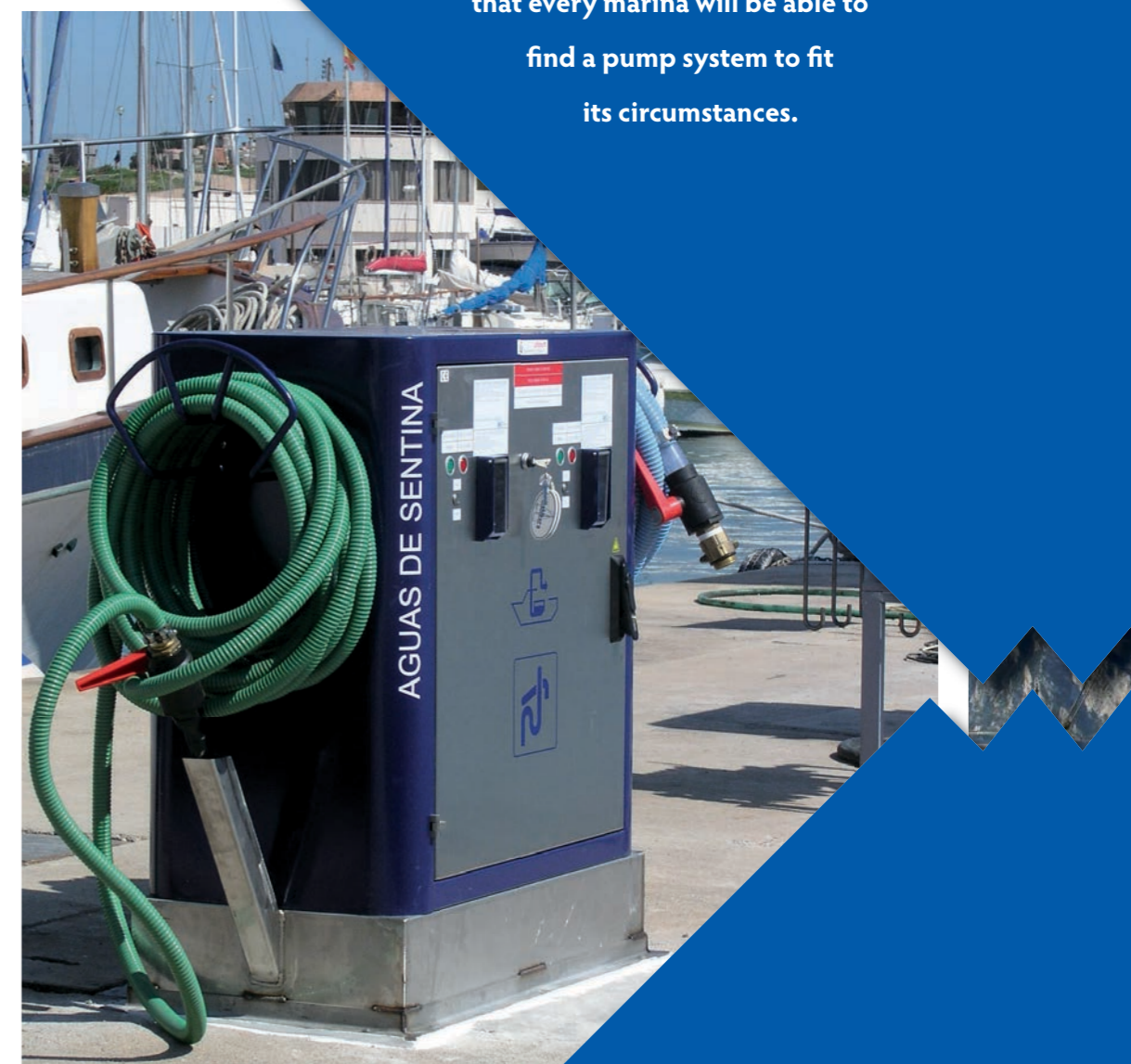
A PUMP-OUT SYSTEM FOR EVERY MARINA

When you are looking for a drain pump-out system, Seijsener always offers the widest range. For example from the legally required (in some countries) waste water pump to a combined pump that is also suited for oily water.

Ships mostly have to sail over to the pump, but Seijsener also offers the option of taking the mobile pump over to the ship. Or every berth can be fitted with its own suction point connected to a central pump system. Seijsener can make it all happen, depending on what best suits your marina.

30 YEARS OF EXPERIENCE: PEACE OF MIND

Seijsener was the first to install a pump for oily waste water in the Netherlands back in the 1980s. Body, operation, and connections have been adjusted and perfected over the past thirty years. Choosing a Seijsener drain pump system means choosing proven quality!





▲ **SPC-6** One engine, two fully separated liquid systems, that is the secret of the SPC-6 duo pump. That enables a highly compact build, and guarantees that oily water and waste water cannot be mixed. There is the option of adding a drip tray bedplate, ensuring that oil will not end up in the ground or water during servicing.

▼ **SP-20** The perfect fit for those marinas who want a basic pump-out unit for waste water tanks. With its stainless steel housing, heavy duty pump and straightforward controls, the SP-20 stands for years of trouble-free use at a reasonable price.



clean water, satisfied guests

PUMP-OUT



◀ **SP-150** Compact, economical, excellent performance: these are the features of our 'basic pump' for waste water, the SP-150. This slimline model occupies little space on your jetty. Its wide hose holder has been integrated into the polyester cover. Made of non-corrosive materials with a special coating.



▲ **SP-5** A true eye-catcher. With its height of two metres, this pump will immediately attract the attention of passing ships. The suction hose can be hidden in an attractive box. Ideal for placement alongside a fuel pump. Again, the bedplate doubles as a drip tray.

▶ **SP-2** A fine addition to your jetty in its compact stainless steel body. The SP-2 can be mounted both on and in a jetty - in the latter case the body will be 15cm lower. The hose holder can be fitted to the frame or installed detached from the pump. The bedplate doubles as a drip tray.



clean water, satisfied guests

PUMP-OUT

SP-510 The SP-510 mobile pump is a lightweight pump that is easy to move around, making it a highly economical solution for a range of different applications. All components are made of non-corrosive materials or have an epoxy coating, ensuring the pump can withstand salt water and the severest of weather conditions. The sturdy hose holder comes with 18-inch tyres and 210-litre waste water tank.



SP-8 A mobile pump with vacuum system for emptying toilets or the extraction of engine oil from boats. The body is made of non-corrosive materials. It has a filter to block out unpleasant odours. Weight 40kg, equipped with a 100-litre vacuum tank.



OIL/WATER SEPERATOR

The biggest difference between a pump for sewage and one for oil-contaminated waste water is the drainage method used. Whereas the contents of a sewage tank can simply be discharged into the culvert, local authority requirements can mean that bilge water has

to have its oil component separated out first. Our oil and water separator, which is installed underground, is ideally suited for this job!



INTERNATIONAL QUALITY MARKS

Criterion:	as set by:	
	Blue Flag (int)	Gold Anchor (UK)
With a correctly installed drain pump installation your marina will meet the following criteria of international quality marks:		
Visually clean water (no oil, litter, sewage or other evidence of pollution).	<input checked="" type="checkbox"/>	<input checked="" type="checkbox"/>
Bilge water pumping facilities are present in the marina.	<input checked="" type="checkbox"/>	<input checked="" type="checkbox"/>
Toilet pumping facilities (black water) facilities are present in the marina.	<input checked="" type="checkbox"/>	<input checked="" type="checkbox"/>



central drain pump systems for tanks of 50 to 50,000 litres

SUCTION POINTS

Water sports enthusiasts are ever more environmentally-minded. Increasing numbers of countries have banned waste water discharging. Marinas are expected to enable the proper draining of waste water by offering simple, and quick drain pump facilities. Waste water drainage at every berth through separate suction points would then be the obvious solution. Yacht owners will then not have to leave their berth to empty their waste water tank. Seijsener Marina Services anticipates the needs of marinas and builds central waste water facilities that suit the type of marina users and available drainage options. Some examples of customised systems:

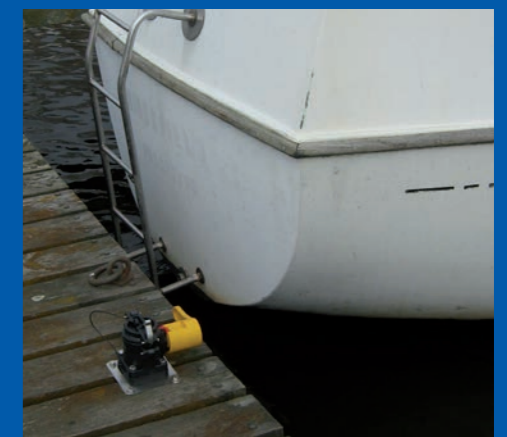
▼ Suction point under the jetty

Time to empty the waste water tank? Grab a connector with a hose from behind a hatch in the jetty. By pushing the suction nozzle into the deck fitting and opening the tap, it will create a vacuum and empty the tank. After use, hose and suction nozzle will quickly disappear into the hatch in the jetty.



▼ Suction point on the jetty

The user retrieves a hose cart and connects the hose to a suction point on the jetty. The other end of the hose is hooked up to the deck fitting on the yacht. Draining is started and stopped by pressing a button.



▲ Suction point with tank check

Optimum convenience. Mooring, hooking up, and not having to worry about waste water draining anymore. A central pump with several hook-ups will continuously check whether the tank is empty. If not, it will be emptied automatically.

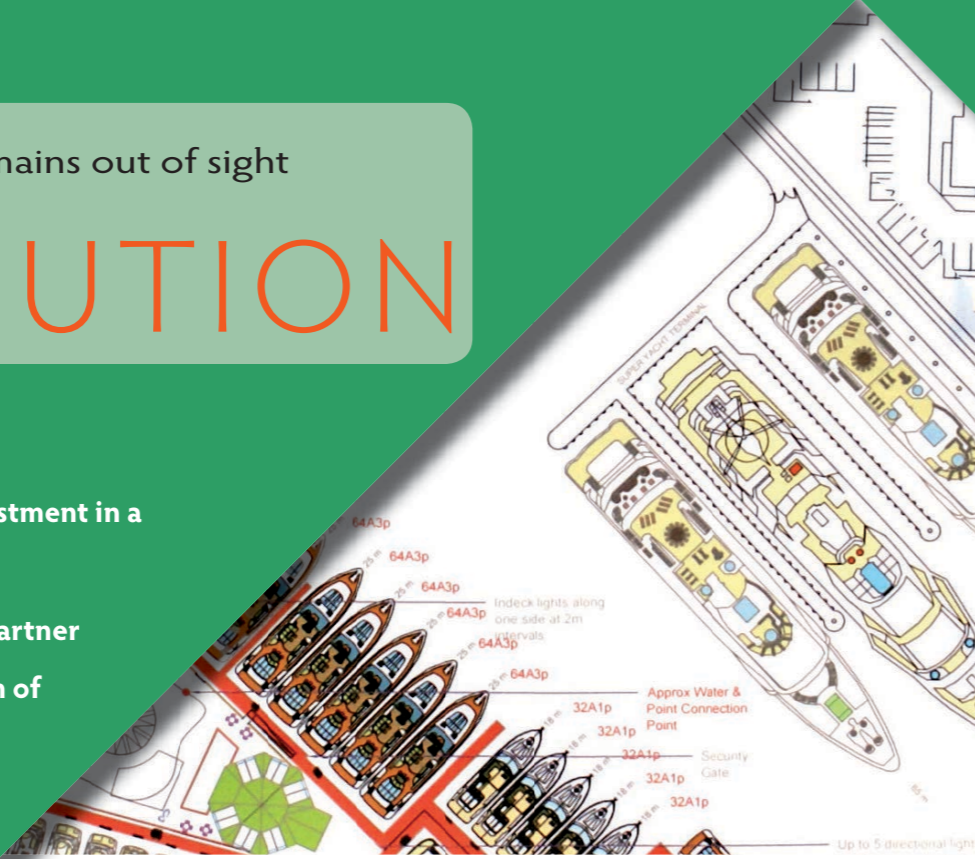
your biggest investment remains out of sight

DISTRIBUTION

Cables, pipes, fusing. The biggest investment in a harbour largely remains out of sight.

Seijsener Marina Services is the best partner for the correct and efficient calculation of distribution networks.

Whether you need power, water, gas, sewage, TV or internet.



BALANCED CAPACITY

A thick cable conducts more power than a thin one, but costs more. Proper calculation of the required cable capacity will therefore always yield savings. Seijsener considers a multitude of factors as part of that calculation. These factors include the type of boats that use your marina, the number of nights people spend on their boats, the climate, and concurrent use of facilities. Based on years of knowledge and experience with hundreds of marinas we subsequently work out a cable and pipe network that will never be too small, but will not burden you with expensive, unnecessary overcapacity either..



MAIN DISTRIBUTION BOXES

Main distribution boxes come in all shapes and sizes. The design and supply of main distribution boxes is an art that Seijsener Marina Services masters like no other. Depending on the required capacity and the number of outlets, we can supply customised boxes, with a fitting design, both for mounting on jetties or on the shore.

POWER POINT BOXES

We can supply a wide range of boxes with power sockets and residual current devices for use in winter storage areas and/or maintenance rooms.





means of access and payment

SEP CARD

More and more marinas are discovering the benefits of a service card that can be used throughout the marina for all kinds of facilities. A SEP card with your marina's logo underlines your guest's relationship with the marina .

But the main benefits of the SEP card are on the management side. Simpler access control, less energy consumption: whatever your objective, the SEP card is the prime way of making it happen.

NON-CONTACT CARD

The SEP card is ideal for use in a water based environment. You only have to hold this card up in front of the reader to activate it. That means no wear on the magnetic tape stripe or other parts.

THE CASHLESS SOLUTION

Coin-operated dispensers are theft-prone. Marina operators who opted to have a SEP card system installed at their marina are reporting a drop in vandalism, theft and public nuisance on their jetties.





TIME OR VOLUME?

Shower time is often charged per minute; drinking water is mainly dispensed based on volume. The SEP card leaves you free to choose how you want to charge users, using time units or consumed volumes.

All your guest will have to do is hold his card up to the reader and push a button.

His or her SEP card will subsequently be charged for a certain time or volume, after which the guest can dispose of the purchased power or water.

FROM A DISPENSER

The SEP card can be issued at the service desk of your marina office. But you can also place a card-dispensing machine on site. Guests can also use their bank card to transfer funds to their SEP card. If desired, the dispenser can also collect used cards and refund any remaining balance.

A card-dispensing/cash-to-card machine allows you to serve greater numbers of guests without having to hire additional staff!



INTERNATIONAL QUALITY MARKS		
critierion:	as set by:	
<i>By using the SEP card, your marina can meet the following criteria of international quality marks:</i>	Blue Flag (int) 	Gold Anchor (UK) 
Spill management plan; energy	<input checked="" type="checkbox"/>	<input type="checkbox"/>
Spill management plan; water	<input checked="" type="checkbox"/>	<input type="checkbox"/>

means of access and payment

SEP CARD

ENERGY MANAGEMENT

Choosing to have your guests pay for energy is not only a cost management measure but also a way of controlling energy supplies and preventing energy and water wastage. In many countries, companies in the tourism sector are already legally obliged to take measures against such wastage. The SEP card gives you the best instrument to actively work on keeping control of the consumption of energy and water.



ACCESS CARD

Permanent berth holders will welcome the SEP card as an excellent replacement to the access key and, for transient marina users, it is an ideal card. For transient marina users the card can be programmed to only provide the carrier of the card access to facilities, such as sanitary facilities, during that user's stay at the marina.



mouse-click energy management

KICK 3000

FOR GUEST AND OPERATOR

There is a tendency to computerise administrative tasks in many marinas. On the other hand, guests want to be able to check a meter reading when paying for power or water. Kick 3000 meets both wishes: guests get their individual metering, and the marina operator can consult meter readings on his PC and charge customers whenever required.

TAILORED AMPERAGE

Kick also offers the option of raising amperage for individual berths to meet the guest's wishes. For example, 16A for one berth, and 32A for the berth next to it. The operator can itemise the different connection values based on different rates.

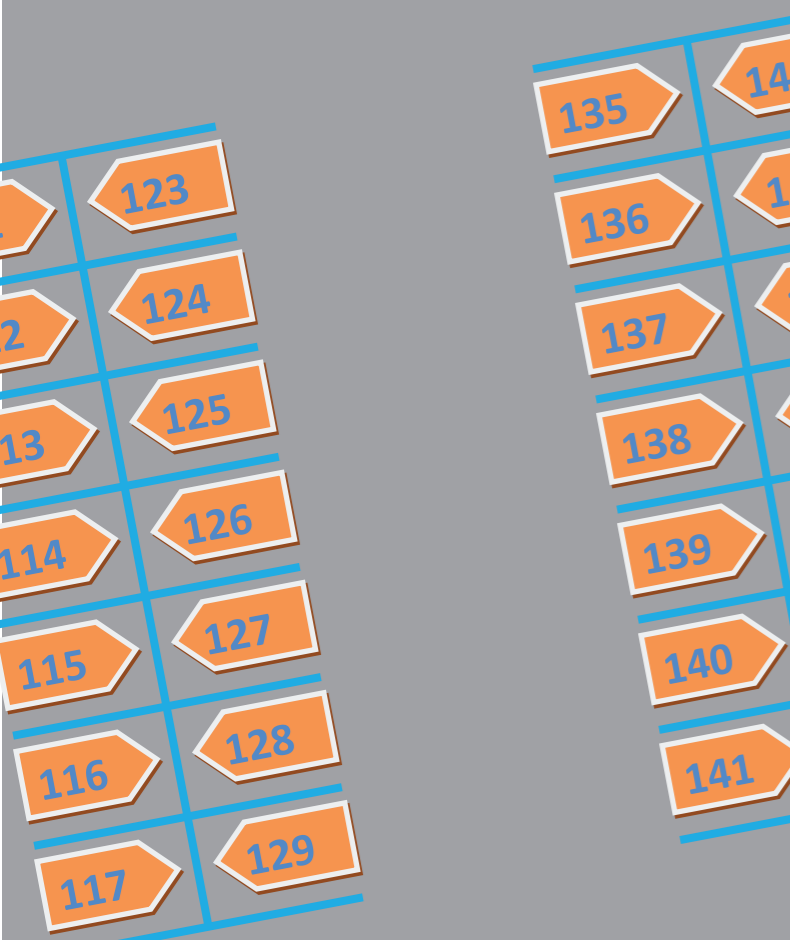
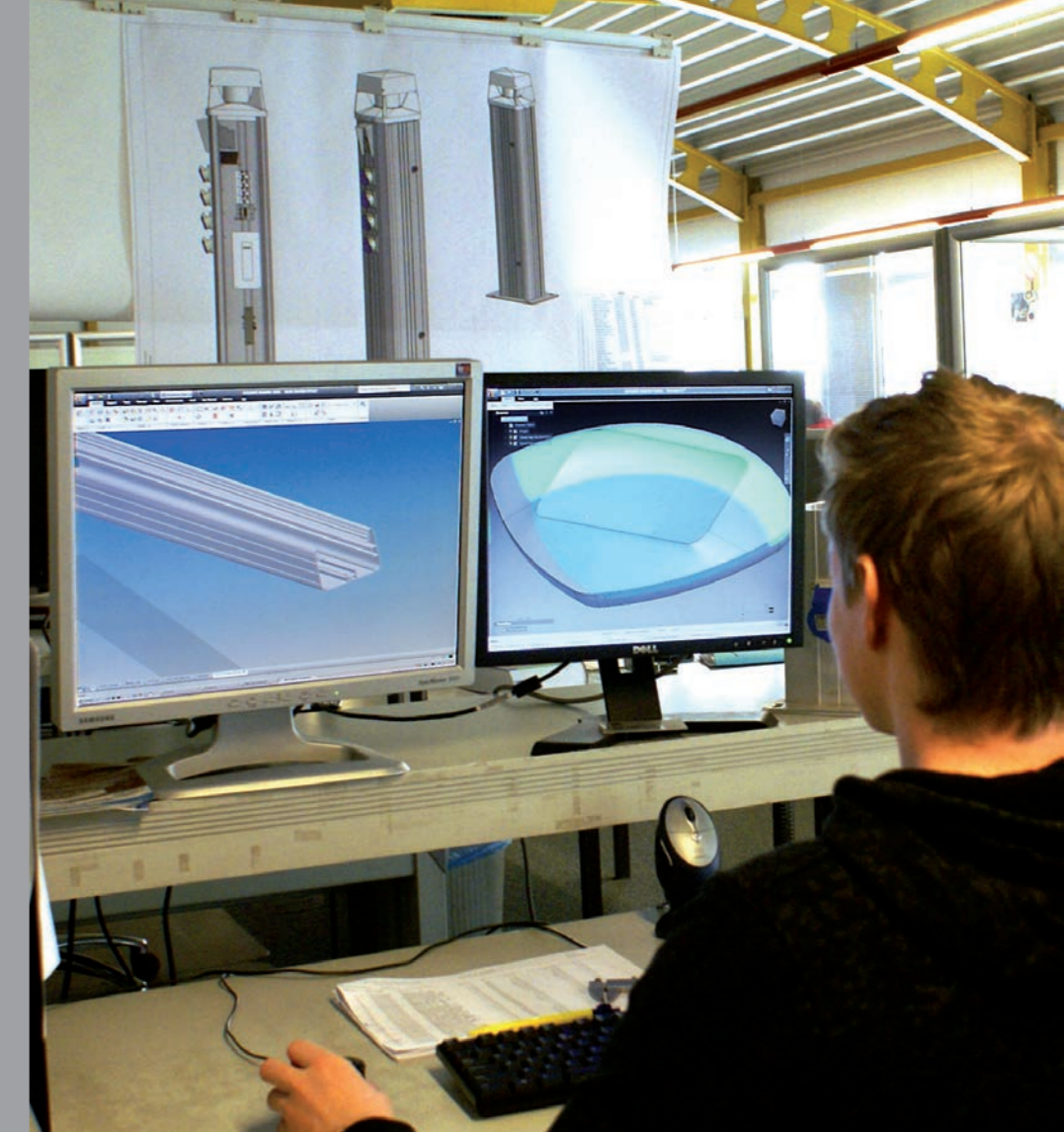
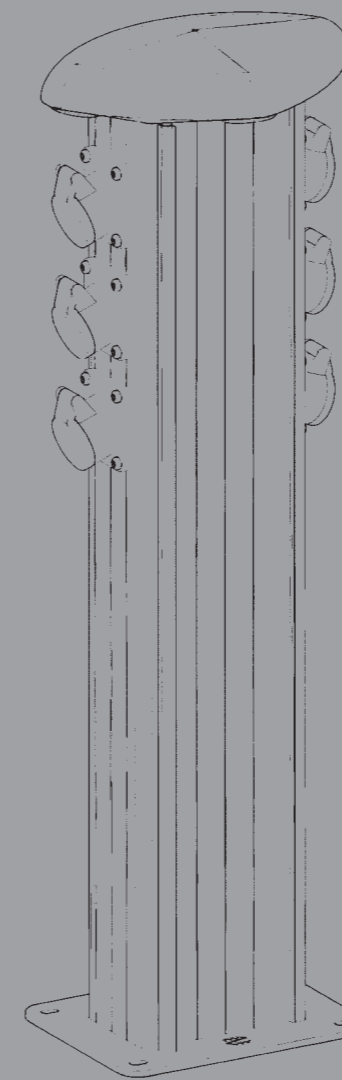
COMPACT INSTALLATION

The Kick 3000 system is a compact addition to distribution boxes. Power and also water and gas can be measured in whatever way.

Data transfers can be effected by wireless or through a data cable.

INTUITIVE INTERFACE

The software that comes with the Kick 3000 is very user-friendly. It presents a plan of your marina on screen, after which you can click on a specific berth to activate or deactivate it, change the amperage, and check meter readings. Kick 3000 makes energy and water consumption manageable both for you and your guests!



make your wishes reality DESIGN

UNIQUE MARINA

Your marina is unique, and so are your wishes for its technical infrastructure. Seijsener will be glad to advise you on the practical realisation of your wishes. The end result is a customised marina and berth layout with an appropriate infrastructure.

At Seijsener, product customisation goes further than merely the colour of a dock pedestal or your logo on it. Modifications to products

or even a wholly new design are also possible.

CUSTOMISED DESIGN

Our design and drawing department ensures perfect preparation of all projects. Once the drawing of your dock pedestal has been made, it can, for example, be turned into a 3D model so that you can see all sides of the dock pedestal in question on a computer screen.

The hole layout in the dock pedestal is cut out in the factory through a computer-controlled

process based on the same drawing: what you see in the 3D presentation, is what you will later see out on your jetty.

USER-FRIENDLY

Seijsener's designers are also experienced marina users. Our products are therefore always highly user-friendly. And Seijsener also assumes the perspective of a fitter during the design stage in order to ensure quick and cost-efficient installation.

Seijsener designs, manufactures, and sells a wide range of marina-related items. Everything you might need is available from our stock.

If you are looking for something you cannot find in our brochure, just give us a call. Our actual assortment is far greater than we can show here.



always in stock

ACCESSORIES

reliable and sustainable solutions

CHARTER & FISHING

Quality and sustainability are core notions when it comes to installations for power and waste water for the charter & fishing sector. This is because, despite the often limited management, such an installation must be suited for intensive use for long periods of time. Seijsener Marina Services knows like no other what specific needs exist in the charter & fishing sector, and has developed products that guarantee years of trouble-free use.

Our power and water dispensers become even easier to manage when you equip them with a metering and/or payment system.



reliable and sustainable solutions

CHARTER & FISHING

DRINKING WATER SUPPLY

Drinking water supply for the charter & fishing sector is in good hands at Seijsener.

We have developed tap machines with a capacity of 3 to 30 m³/h for the charter & fishing sector, also available in a frost-proof version.



WASTE WATER PASSENGER FLEET

Emptying waste water tanks is something operators of charter boats do not want to have to worry about. That is why Seijsener Marina Services has developed a waste water pump installation with several connection points. Once connected, the pump will regularly check whether any waste water needs to be pumped out. The ship's captain will therefore always set off with an empty waste water tank! The illustration below shows a subterranean central pump, which excludes any kind of sound pollution thanks to its concrete body and stainless steel cover.



POWER DISPENSERS

Power dispensers are increasingly taking over from diesel generators in the charter & fishing sector. Skippers and people living near harbours are appreciating this clean and quiet form of energy supply.

Seijsener supplies high-quality power dispensers for the charter & fishing sector.



METERING / PAYMENT SYSTEM

When power or water consumption is to be charged for, Seijsener can install different types of payment systems. Paying with chip-and-PIN, credit card, cash or the SEP card: it is all possible.

Power dispensers and water outlets are also very suited for use with the metering and switch system Kick 3000. That system makes it very easy to keep track of consumption, and charge for it, if required.



The Netherlands

Noorder IJ- en Zeeweg 11

P.O. Box 406

1500 EK Zaandam, The Netherlands

T +31 - 75 - 6810 611

F +31 - 75 - 6123 276 E info@seijsener.nl

www.seijsener.com

